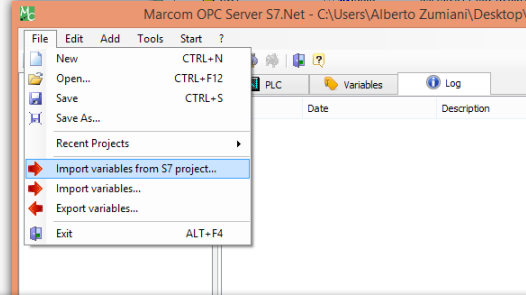
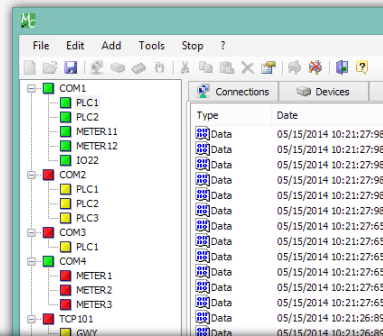


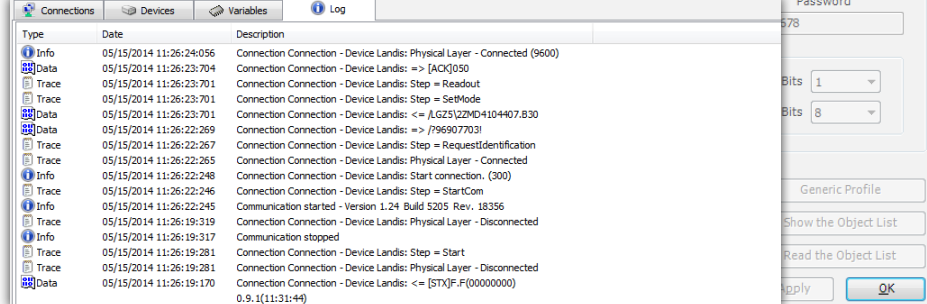
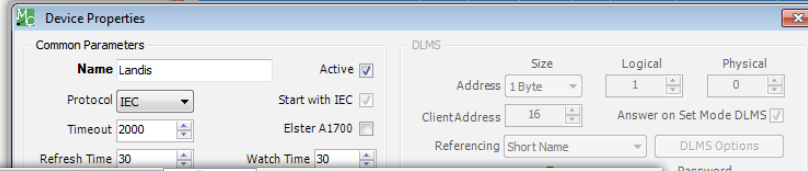
# THE MOST IMPORTANT FEATURE OF ALL OFFERED OPC SERVER SOFTWARE SOLUTIONS ARE:

**High speed:** communications on Ethernet network assure high speed,  
**Simple and fast configuration,**  
**extremely cheap:** licenses linked to variables count to fit every need. The OPC server software is optimized for fast data transfer and they are compatible with all **Microsoft Operating systems** 32 bit and 64 bit.



The screenshot shows the 'Variables' table in the Marcom OPC Server. The table has columns for Name, Type, N. DB, Address, Bit, Size, Data Type, and Description. It lists several variables related to static and dynamic data transfer.

Name	Type	N. DB	Address	Bit	Size	Data Type	Description
DB_ISTANZA_FB_EXP.STATIC.TON_1.IN.IN	DB	162	0	0	-1	BOOL	
DB_ISTANZA_FB_EXP.STATIC.TON_1.IN.PT	DB	162	2	0	-1	TIME	
DB_ISTANZA_FB_EXP.STATIC.TON_1.OUT.Q	DB	162	6	0	-1	BOOL	
DB_ISTANZA_FB_EXP.STATIC.TON_1.OUT.TET	DB	162	8	0	-1	TIME	
DB_ISTANZA_FB_EXP.STATIC.TON_1.STATIC.ST	DB	162	12	0	-1	BYTE	



## MARCOM OPC SERVER



MARCOM OPC SERVER SOFTWARE  
OFFERS SOLUTIONS FOR INDUSTRIAL  
DATA ACQUISITION

**Z Telemetri**  
www.ztelemetry.com

Z Telemetri Telekomünikasyon Yazılım San. Tic. LTD. ŞTİ.  
Kavaklıdere Mah. Atatürk Bulvarı No: 151/804 Çankaya / Ankara  
info@ztelemetry.com Tel: +90 312 417 1243





# WE OFFER FOLLOWING OPC SERVERS:

## OPC SERVER TO COMMUNICATE WITH ENERGY METERS THAT IMPLEMENT IEC-62056 (DLMS/COSEM), -21 , -42, -43, -61 , -53, -46 STANDARDS

This OPC server designed to communicate with energy meters that implement DLMS protocol (IEC-62056, IEC-62056-21 , IEC-62056-42, IEC-62056-43, IEC-62056-61 , IEC-62056-53, IEC-62056-46 standards). It supports serial communication through RS232, RS485 and with optical probe.

Ideal to monitor major manufacturers energy meters: Landis+Gyr, Azur Energia, Iskraemeco, EMH, Actaris, Elster, Sagem, PowerLogic, Elgama-Elektronika, Enerlux, DPEE,...

## OPC SERVER TO COMMUNICATE WITH ALL MODBUS DEVICES THROUGH TCP OR RTU PROTOCOL

OPC Server Modbus TCP/IP is the ideal tool to connect field devices with Ethernet MODBUS or MODBUS RTU interfaces to control or SCADA systems.

Software completed with tools to analyze and monitor traffic on the network (performance analysis) and communication diagnostic on OPC variables. Smart algorithm to optimize communication, first of all on serial networks.

